

# Nazareth Parish

## CATHOLIC PARISH OF GROVEDALE TORQUAY & ANGLESEA

*Nazareth Parish is committed to the safety, wellbeing and dignity of all children, young people and vulnerable adults.*

*Nazareth Parish acknowledges the Wadawurrung people who are the traditional custodians of this land and we pay respect to the Elders past and present and emerging.*

NOVEMBER 3, 2024

31ST SUNDAY IN ORDINARY TIME

### Regular Weekly Mass

#### PETER KEARNEY CONCERT SERIES

Join us for an inspiring afternoon on Saturday 23rd November, 3pm at St Therese Church, Torquay. Experience the captivating songs and heartfelt stories of remarkable individuals whose faithful lives have infused the world with hope and compassion. Tickets will be available at the door for \$10 per person or \$20 for a family. All welcome.



#### ROADWORK AT TORQUAY

The roadwork continues out the front of St Therese Church. The road is blocked on our side of the road. This obviously requires extra thought when travelling to the Church as the only way to enter our carpark is via Zealy Bay Road/Service Road. Please ensure that the driveway in front of the Church remains clear at all times. You may drop off and pick up in the turnaround area, but parking in the driveway is not permitted.

#### ACACIA PASSIONIST FAMILY GROUP GROVEDALE

Melbourne Cup Day luncheon is on Tuesday 5th November at Fletchers 50 Meadowvale Dr, Grovedale commencing at 12 noon. Lunch is provided at \$5 per head, bring your own drinks and money for sweeps. Prizes for best dressed male & female Reply by 3rd Nov for catering purposes. Come and enjoy, contact Jenny 0447 280 067.

#### RAFFLE TICKETS

Our annual combined Catholic Churches raffle is almost over. Please ensure all raffle ticket books, including any unsold, are **returned this weekend**, 3rd November. Raffle is drawn 5th December.

#### THANKSGIVING ENVELOPES

The envelopes are available for the period November 3 2024 to February 23 2025 are now available for collection at our 3 churches. Fr Joel and myself thank you for your ongoing support, please contact me at parish office if you have any queries ~ Brian McMahon.

#### PASSIONIST FAMILY GROUP CHRISTMAS LUNCH

Baringbah and Mannagum Family groups will be celebrating Christmas together this year.

Thank you to all those who have responded to the invitation.

DATE: Sunday 17th November

TIME: 12 noon

VENUE: Fyansford Hotel, 67 Hyland St. Fyansford - in the "Hyland Room"

In lieu of a KK please consider a donation of toiletries, sanitary products or pop a cash donation in an envelope for "Share the Dignity" a support group for disadvantaged girls and women in the region. RSVP Monday 28th October Rosemary Featherston 0400044387

#### Rosary:

##### Wednesday 9am

St Therese Church, Torquay

##### Wednesday 9.30am

St Therese Church, Torquay

##### Thursday 9.30am

Nazareth Church, Grovedale

##### Weekend Mass:

##### Saturday Vigil 6.00pm

St Christopher's Church, Anglesea

##### Sunday 8.45am

St Therese Church, Torquay

##### Sunday 10.30am

Nazareth Church, Grovedale

##### Next Monthly Mass

##### Sunday 17th November 9am

Iona College, Charlemont

3rd Sunday of each month

##### Reconciliation:

After Mass during the week or by appointment

### Find us online

Website: [tagparish.com.au](http://tagparish.com.au)

Facebook: [/nazarethcatholicparish](https://www.facebook.com/nazarethcatholicparish)

Email: [grovedale@cam.org.au](mailto:grovedale@cam.org.au)

Rosters available [here](#)

### Stewardship *Thank you*

**First collection**—helps with all the costs related to running our parish—pastoral programs, wages, loan repayments, utilities, liturgy expenses etc.

**Second collection**—supports our parish priest and retired priests of the Archdiocese.

#### Tap n Go

Now available in the entrance of each Church, contributions go towards the first collection.

**CATHOLIC CHAPLAINCY AT UNIVERSITY HOSPITAL  
GEELONG. BARWON HEALTH.**

On any given day, there is an average of 100 patients identifying as Catholic in the hospital. Around half of all patients identify with some religious tradition.

St. Mary of the Angels parishioners provide for the services of a chaplain at the hospital as part of the Spiritual Care department.

Our chaplain provides Spiritual Care by supporting patients and families through access to the Sacraments, Holy Communion, coordinating a priest to visit, and End of Life care. The chaplain supports patients and families through prayer, and compassionate listening.

If you or someone you love is to be admitted to hospital, and would appreciate a visit and Spiritual Care from the chaplain, Peter can be contacted either on 4215 0627 or through St Mary's Parish office. 5222 1977.

**PARISH OFFICE**

Tuesday 5th November the parish office will be closed for the Melbourne Cup public holiday.



Reopen Wednesday morning 9am.

**NEW PARISH MASS TIME**

As of 1st December, the beginning of Advent the new Mass times are as below.

**Signs of Hope - People of Faith**

**PETER KEARNEY  
CONCERT & REFLECTION**

Songs and stories about people whose faithful lives have brought hope and compassion into the world. Subjects include \*St. Joseph,\* Mary Mother of Jesus, St. Francis of Assisi, \*St. Mary MacKillop,\* Sr. Irene McCormack - Australian Josephite nun killed in Peru,

HOSTED BY  
Nazareth Catholic Parish

**SONGS & STORIES-**

**Saturday 23rd November**

**3.00pm**

**St Therese Catholic Church**

43a Surfcoast Highway

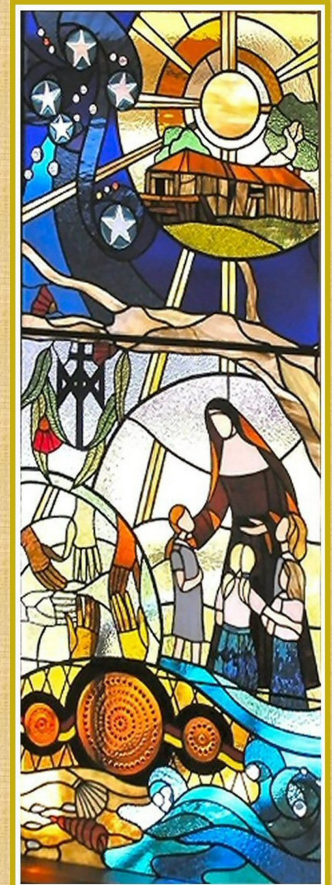
**TORQUAY**

**\$10 per person/ \$20 family**

"Peter has the special gift of making the stories and message of Jesus relevant to our modern daily life."  
(Fr. Val Patterson MSC)



**PETER KEARNEY**  
Australian singer and songwriter who has travelled Australia and overseas since 1985 to share his music and stories. His best known compositions include 'The Beatitudes', 'Fill My House', and 'Where is your Song, my Lord'. Fifteen CDs of Peter's songs have been published. Several of his compositions are included in the 'As One Voice' hymnal.



Mary MacKillop & children. Artwork by Dorothy Woodward from a window at St. Joseph's School, Milperra

**NAZARETH CATHOLIC PARISH**

**WEEKEND PARISH MASS TIMES**

Saturday 6pm ~ St Christopher's Church, Anglesea

Sunday 9am ~ St Therese Church, Torquay

Sunday 11am ~ Nazareth Church, Grovedale

Sunday 5pm ~ St Therese Church, Torquay

effective from 1st December

**A VIBRANT COMMUNITY  
JOURNEYING WITH JESUS**

**PRAYING WITH POPE FRANCIS**

**FOR THOSE WHO HAVE LOST A CHILD**

Let us pray that all parents who mourn the loss of a son or daughter find support in their community, and may receive peace of heart from the Spirit of Consolation.

**CHAPEL OPEN**

Chapel access at St Therese Church is inline with the office hours. To gain access please come to the parish office door.

Office hours - 9am to 3pm  
Tuesday to Friday.

**HOME VISITS**

If there are any parishioners who are sick or housebound and would like to receive communions and home visits. Please contact the Parish Office 9412 8444



**First Reading Deuteronomy 6:2-6**

*Hear Israel, you shall love the Lord your God with all your heart.*

Moses said to the people: 'If you fear the Lord your God all the days of your life and if you keep all his laws and commandments which I lay on you, you will have a long life, you and your son and your grandson. Listen then, Israel, keep and observe what will make you prosper and give you great increase, as the Lord God of your fathers has promised you, giving you a land where milk and honey flow.

'Listen, Israel: The Lord our God is the one Lord. You shall love the Lord your God with all your heart, with all your soul, with all your strength. Let these words I urge on you today be written on your heart.'

**Responsorial Psalm Ps 17:2-4. 47. 51. R.v.2**

(R.) I love you Lord, my strength.

1. I love you, Lord, my strength,  
my rock, my fortress, my saviour.  
My God is the rock where I take refuge;  
my shield, my mighty help, my  
stronghold.

The Lord is worthy of all praise:  
when I call I am saved from my foes.

(R.)

2. Long life to the Lord, my rock!  
Praised be to the God that saves me.  
He has given great victories to his king  
and shown love for his anointed. (R.)

**Second Reading Hebrews 7:23-28**

*This one, because he remains for ever, has an eternal priesthood.*

There used to be a great number of priests under the former covenant, because death put an end to each one of them; but this one, Christ, because he remains for ever, can never lose his priesthood. It follows, then, that his power to save is utterly certain, since he is living for ever to intercede for all who come to God through him.

To suit us, the ideal high priest would have to be holy, innocent and uncontaminated, beyond the influence of sinners, and raised

up above the heavens; one who would not need to offer sacrifices every day, as the other high priests do for their own sins and then for those of the people, because he has done this once and for all by offering himself. The Law appoints high priests who are men subject to weakness; but the promise on oath, which came after the Law, appointed the Son who is made perfect for ever.

**Gospel Acclamation John 14:23**

Alleluia, alleluia!

All who love me will keep my words,  
and my Father will love them and we will  
come to them.

Alleluia!

**Gospel Mark 12:28-34**

*This is the first commandment, and the second is similar to it.*

One of the scribes came up to Jesus and put a question to him, 'Which is the first of all the commandments?' Jesus replied, 'This is the first: Listen, Israel, the Lord our God is the one Lord, and you must love the Lord your God with all your heart, with all your soul, with all your mind, and with all your strength. The second is this: You must love your neighbour as yourself. There is no commandment greater than these.' The scribe said to him, 'Well spoken, Master; what you have said is true: that he is one and there is no other. To love him with all your heart, with all your understanding and strength, and to love your neighbour as yourself, this is far more important than any holocaust or sacrifice.' Jesus, seeing how wisely he had spoken, said, 'You are not far from the kingdom of God.' And after that no one dared to question him any more.

© The scriptural quotations are taken from the Jerusalem Bible, published and copyright 1966, 1967 and 1968 by Darton Longman and Todd Ltd and Doubleday & Co Inc, and used by permission of the publishers.

The English translation of the Psalm Responses, the Alleluia and Gospel Verses, and the Lenten Gospel Acclamations, and the Titles, Summaries, and Conclusion of the Readings, from the Lectionary for Mass © 1997, 1981, 1968, International Committee on English in the Liturgy, Inc. All rights reserved.

The prayers are from the English Translation of the Roman Missal © 2010 International Committee on English in the Liturgy Inc. (ICEL). All rights reserved.



**REFLECTION by Fr Michael Tate  
The Dual Command**

Jesus does not command us to love 'God' in the abstract. Teaching Jew to Jew he says: 'You shall love the Lord your God' – the Lord who had rescued the Jewish people from slavery. So, commanding a love which responds to an initiative of Divine Love.

Why wouldn't one respond 'heart, mind, strength, soul' in gratitude for the gift of life itself, for some particular person or incident, for the beauty and grandeur of nature, for rescue from some situation which seemed to engulf us? And if the Lord God loved you in such a way, why wouldn't you love yourself?

Then you can properly 'Love your neighbour as yourself'. There is nothing sentimental in his teaching from Leviticus 19:18 and the preceding verses. Jesus was pointing to the system of social justice which looked after the poor and which did not exploit workers. It is up to us as global citizens of the 21st century to recognise as 'neighbours' those beyond our borders and to love them in the practical 'Levitical' way.

Fulfilling the Dual Command, we guard against the extremes of religious piety or social activism and become Christian humanists loving God and neighbour.

We might pause a moment to pray in responsive gratitude to the Lord God, and to commit ourselves to loving our neighbour, hoping to hear the words of Jesus Christ: 'You are not far from the Kingdom of God.'

**PRAYING FOR THOSE WHO HAVE DIED**

**Recent deaths:** *Marg Sheehan, Santos Felice, Billy Ettl (Terry's Roseborough brother)*

**Anniversaries who are at this time:** *Mill Dickie, Mary McMahon*

**PRAYING FOR THE SICK IN OUR COMMUNITY**

*Our thoughts are with those who are unwell at this time.*

*Please submit a consent form to have a loved one prayed for.*



### Parish Priest

Fr Joel Peart: [joel.peart@cam.org.au](mailto:joel.peart@cam.org.au)

### Parish Staff:

Tracy Ford: [tracy.ford@cam.org.au](mailto:tracy.ford@cam.org.au)

Brian McMahon [brian.mcmahon@cam.org.au](mailto:brian.mcmahon@cam.org.au)  
[grovedale.liturgy@cam.org.au](mailto:grovedale.liturgy@cam.org.au)

### Nazareth Parish Leadership Team

[leadershipteam.grovedale@cam.org.au](mailto:leadershipteam.grovedale@cam.org.au)

Greg Carty	Natalie Egerton
Denise Arnel	Josh McElgunn
Brian Keane	Rosemary Malone
Tracy Ford	Paul Daffey
Paul Egan	Rosemary Featherston
Fr Joel Peart	Nnamdi Elege

### Nazareth Safeguarding Committee

Marg Mahoney	—Chair person
Rosa Rebula	—Grovedale
Rosemary Malone	—Torquay
Fran Findlay	—Anglesea

### Parish Office

43a Surfcoast Highway, Torquay Vic 3228  
Phone: 9412 8444  
Email: [grovedale@cam.org.au](mailto:grovedale@cam.org.au)

### Parish Presbytery

72 Marine Drive, Torquay Vic 3228

### Our Parish Schools:

#### Nazareth Catholic Primary School

Griffith Street, Grovedale 3216

Principal: Reuben Johnson Phone: 5243 0502

#### St Therese Catholic Primary School

Grossmans Rd, Torquay 3228

Principal: Josh McElgunn Phone: 5261 4246

#### Lisieux Catholic Primary School

South Beach Rd, Torquay 3228

Principal: Susan Ryan Phone: 9089 6614

#### St Catherine of Siena Catholic Primary School

125 Warralily Boulevard, Armstrong Creek 3217.

Acting Principal: Allison Wedding Phone: 5264 5934

#### Iona College

242 Horseshoe Bend Rd, Charlemont 3217

Principal: Damian McKew Phone: 5229 0009

### Home Visits / Communion at Home

Anglesea: Liz Clark 5263 1812

Grovedale: Jill Healy 5241 4070

Torquay: Annie Byrne-Phillips 0409 516 907

### Bulletin Notices

Please have them to the Office by Wednesday evenings.

Email: [grovedale@cam.org.au](mailto:grovedale@cam.org.au)

Postal: 43a Surfcoast Highway, Torquay Vic 3228

### Office Hours

Our hours are:- **Tuesday - Friday, 9:00 am - 3:00 pm.**

Outside of these hours, please leave a message and one of the staff will contact you when they are next in the office.

**Office Closed on Public Holidays**

# HAYDEN

When it comes to real estate across Geelong & the Surf Coast, there's only one team to turn to.

Bryan Hayden | 5261 2101 | 0417 613 250

SALES | LEASING | PROPERTY MANAGEMENT | LAND | COMMERCIAL | PROJECTS

Would you like to advertise your business here? Please reach out to the Parish Office to discuss  
03 9412 8444



**White Cross**  
HEALTHCARE SOLUTIONS

51 WEST FYANS ST. NEWTOWN 3220

PH: 03 5222 6666

FAX: 03 5222 6600

WWW.WHITECROSS.COM.AU



"FUNERALS YOUR WAY"

**5248 3444**

[www.kingsfunerals.com.au](http://www.kingsfunerals.com.au)

**Kings**  
FUNERALS

HERE FOR YOU

65+ YEARS

AFDA MEMBER

GREATER GEELONG

THE BELLARINE PENINSULA

THE SURF COAST