

Nazareth Parish

CATHOLIC PARISH OF GROVEDALE TORQUAY & ANGLESEA

Nazareth Parish is committed to the safety, wellbeing and dignity of all children, young people and vulnerable adults.

Nazareth Parish acknowledges the Wadawurrung people who are the traditional custodians of this land and we pay respect to the Elders past and present and emerging.

AUGUST 25, 2024

21ST SUNDAY IN ORDINARY TIME



RCIA

As we gather this weekend in faith and celebration, we have the joy of welcoming several individuals into our community. This

weekend, we welcome Madeleine Hutchesson, Chloe Magro, Natalie Raidme, Hugh Saunders, Gary Fawthrop, and Stewart Hawker at St. Therese Church, along with Erin Geer and Duane Dickson at Nazareth Church. Madeleine, Chloe, Natalie, Hugh, Erin, and Duane will be baptized into the Catholic Church, and they will be joined by Gary and Stewart, who have already been baptized Christians.

On this special day, they will be accepted into the church, confirmed in their faith, and share in the Eucharist for the first time. We extend our warmest welcome to them all, rejoicing in their anticipation and joy. As they embark on their journey as Neophytes—those newly received into the Catholic Church—we look forward to supporting and encouraging them over the next twelve months. Please take a moment to welcome them after mass and continue to keep them in your prayers.

PRIESTS RETIREMENT FOUNDATION

Next weekend we will take up a special collection for the Priest Retirement Fund. The Priests Retirement Foundation was established in 1990 and contributes to the ongoing care of retired priests across the Archdiocese of Melbourne. This includes, but is not limited to, the provision of suitable accommodation and health care and medical out of pocket expenses.

FR LINH FAREWELL FOOD ROSTER

A food roster is available in each church foyer this weekend. If you have any questions, please reach out to Fran F, Rose F, or Gerry F, who will be happy to assist you.

Each church is being asked to providing a portion of the food for the lunch. We kindly ask that you sign up for one item that you are willing to contribute on the day of the event. Please remember to bring your item on a disposable plate. Thank you for you help.



Regular Weekly Mass

Rosary:

Wednesday 9am

St Therese Church, Torquay

Wednesday 9.30am

St Therese Church, Torquay

Thursday 9.30am

Nazareth Church, Grovedale

Weekend Mass:

Saturday Vigil 6.00pm

St Christopher's Church, Anglesea

Sunday 8.45am

St Therese Church, Torquay

Sunday 10.30am

Nazareth Church, Grovedale

Next Monthly Mass this

Sunday 15th September 9am

Iona College, Charlemont

3rd Sunday of each month

Reconciliation:

After Mass during the week or by appointment

Find us online

Website: tagparish.com.au

Facebook: [/nazarethcatholicparish](https://www.facebook.com/nazarethcatholicparish)

Email: grovedale@cam.org.au

Rosters available [here](#)

Stewardship *Thank you*

First collection—helps with all the costs related to running our parish—pastoral programs, wages, loan repayments, utilities, liturgy expenses etc.

Second collection—supports our parish priest and retired priests of the Archdiocese.

Tap n Go

Now available in the entrance of each Church, contributions go towards the first collection.

COMBINED CATHOLIC RAFFLE 2024

We are excited to announce that our Parish will once again be participating in the 2024 Combined Catholic Parishes Raffle. This annual event is not only a wonderful chance for you to win fantastic prizes, but it also serves as a crucial fundraising opportunity for our Parish community. Tickets for the raffle will be available for purchase from this week through to November 3. Each ticket costs just \$2, or \$20 for the whole book making it an affordable way to contribute and have a chance at winning.

The raffle features an incredible array of prizes, 1st prize being a brand new Kia Picanto with subsequent prizes 2nd to 7th place receiving a Coles Myer gift vouchers with values ranging from \$5000 to \$500.

THE COMBINED CATHOLIC CHURCHES

2024 RAFFLE

\$2 TICKETS

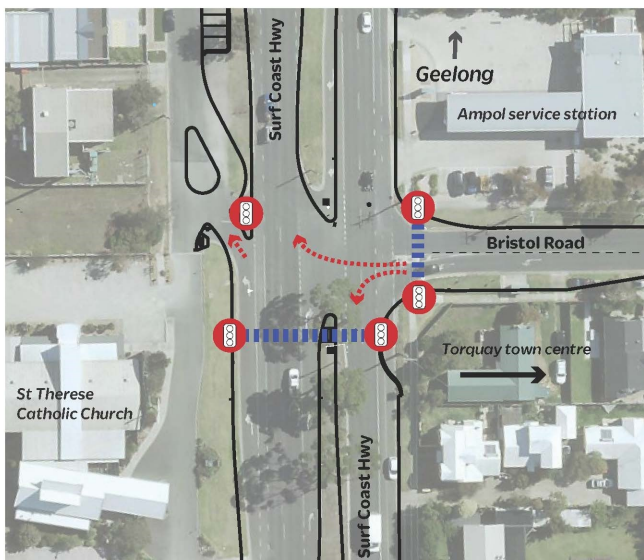
→ → →

Raffle drawn 7th Dec 2024

VICTORIAN COMMISSION FOR GAMBLING REGULATION PERMIT NO - 10159/24

PRIZES

- 1st prize - Kia Picanto car valued at \$21,690
- 2nd prize - Coles Myer gift voucher \$5000
- 3rd prize - Coles Myer gift voucher \$3000
- 4th & 5th prize - Coles Myer gift voucher \$1000
- 6th & 7th prize - Coles Myer gift voucher \$500



BRISTOL ROAD, TORQUAY—ST THERESE CHURCH INTERSECTION

This week we have seen the beginning stages of the planned upgrade of the intersection of Surfcoast Hwy and Bristol Rd. This project has begun and is expected to finish in December. The road will be closed for periods of time throughout this project and we will advise when we can if it will impact access in or out of carpark. Please be patient and allow time during this period.

FR LINH FARWELL GIFT

Contributing to a gift for Fr Linh will be available up until the week of his farewell. There are multiple ways in which you can contribute if you wish. Via cash in an envelope located at each Church, through the online portal on our website by scanning the QR code or direct into the bank account.

Nazareth Parish
 BSB: 083 347
 Acc: 65387 6245
 Ref: Fr Linh Gift



LIVING THE GOSPEL

Message and Medium

We live in a world that is saturated by advertising and marketers trying to persuade us to think certain things, want certain things and even act in certain ways. At times the message and the medium of the message blur and it's not always clear where one stops and the other begins. For Christian people the medium - the person - IS the message (or at least should be!). We are called to live what we believe. That can be tough at times, especially in our modern world, but the challenge comes from the example Jesus gave.

PRAISING WITH POPE FRANCIS FOR POLITICAL LEADERS

Let us pray that political leaders be at the service of their own people, working for integral human development and the common good, taking caring of those who have lost their jobs and giving priority to the poor.

CHAPEL OPEN

Chapel access at St Therese Church is inline with the office hours. To gain access please come to the parish office door.
 Office hours - 9am to 3pm
 Tuesday to Friday.

HOME VISITS

If there are any parishioners who are sick or housebound and would like to receive communions and home visits. Please contact the Parish Office 9412 8444

First Reading Joshua 24:1-2. 15-18

We will serve the Lord God, because he is our God.

Joshua gathered all the tribes of Israel together at Shechem; then he called the elders, leaders, judges and scribes of Israel, and they presented themselves before God. Then Joshua said to all the people: 'If you will not serve the Lord, choose today whom you wish to serve, whether the gods that your ancestors served beyond the River, or the gods of the Amorites in whose land you are now living. As for me and my House, we will serve the Lord.'

The people answered, 'We have no intention of deserting the Lord and serving other gods! Was it not the Lord our God who brought us and our ancestors out of the land of Egypt, the house of slavery, who worked those great wonders before our eyes and preserved us all along the way we travelled and among all the peoples through whom we journeyed. We too will serve the Lord, for he is our God.'

Responsorial Psalm Ps 33:2-3. 16-23. R. v.9

(R.) Taste and see the goodness of the Lord.

1. I will bless the Lord at all times,
his praise always on my lips;
in the Lord my soul shall make its boast.
The humble shall hear and be glad. (R.)
2. The Lord turns his face against the wicked
to destroy their remembrance from the earth.
The Lord turns his eyes to the just
and his ears to their appeal. (R.)
3. They call and the Lord hears
and rescues them in all their distress.
The Lord is close to the broken-hearted;
those whose spirit is crushed he will save.
(R.)
4. Many are the trials of the just man
but from them all the Lord will rescue him.
He will keep guard over all his bones,
not one of his bones shall be broken. (R.)
5. Evil brings death to the wicked;
those who hate the good are doomed.
The Lord ransoms the souls of his servants.
Those who hide in him shall not be
condemned. (R.)

Second Reading Ephesians 5:21-32

This is the great mystery, it applies to Christ and the Church.

Give way to one another in obedience to Christ. Wives should regard their husbands as they regard the Lord, since as Christ is head of the

Church and saves the whole body, so is a husband the head of his wife; and as the Church submits to Christ, so should wives to their husbands, in everything. Husbands should love their wives just as Christ loved the Church and sacrificed himself for her to make her holy. He made her clean by washing her in water with a form of words, so that when he took her to himself she would be glorious, with no speck or wrinkle or anything like that, but holy and faultless. In the same way, husbands must love their wives as they love their own bodies; for a man to love his wife is for him to love himself. A man never hates his own body, but he feeds it and looks after it; and that is the way Christ treats the Church, because it is his body – and we are its living parts. For this reason, a man must leave his father and mother and be joined to his wife, and the two will become one body. This mystery has many implications; but I am saying it applies to Christ and the Church.

Gospel Acclamation John 6:56

Alleluia, alleluia!
Your words, Lord, are spirit and life:
you have the words of everlasting life.
Alleluia!

Gospel John 6:60-69

Lord, whom shall we go to? You have the words of everlasting life.

After hearing his doctrine many of the followers of Jesus said, 'This is intolerable language. How could anyone accept it?' Jesus was aware that his followers were complaining about it and said, 'Does this upset you? What if you should see the Son of Man ascend to where he was before?'

'It is the spirit that gives life,
the flesh has nothing to offer.
The words I have spoken to you are spirit
and they are life.'

'But there are some of you who do not believe.' For Jesus knew from the outset those who did not believe, and who it was that would betray him. He went on, 'This is why I told you that no one could come to me unless the Father allows him.' After this, many of his disciples left him and stopped going with him.

Then Jesus said to the Twelve, 'What about you, do you want to go away too?' Simon Peter answered, 'Lord, who shall we go to? You have the message of eternal life, and we believe; we know that you are the Holy One of God.'



REFLECTION by Dianne Bergant CSA

The decisions called for in today's readings are life decisions. The people at the time of Joshua had to decide which god they would worship. The disciples of Jesus had to decide if he was the one who would fulfill their messianic expectations. We have life decisions to make as well. How will we choose?

The choices we make determine the character of our union with God. God called us out of the slavery of sin and protected us throughout the journey of our lives. Jesus walked with us through the challenges of life and performed wonders for us. Why should we look elsewhere? Because we face new challenges. The new demands placed on us may be so great, or the commitment required of us may be so demanding that we feel that we can no longer walk with him. The church may be changing in ways we do not appreciate, or it may not be changing in the ways we believe it should, and so we may feel that we can walk with him no longer.

If we decide to commit ourselves, we will enter into a union with God that is deeper than anything we have previously known. However, this union will be based on faith. We may understand no more than we did in the past, things may be no more to our liking. But, 'to whom shall we go?' Jesus is God's holy one; he has the words of eternal life.

© The scriptural quotations are taken from the Jerusalem Bible, published and copyright 1966, 1967 and 1968 by Darton Longman and Todd Ltd and Doubleday & Co Inc, and used by permission of the publishers.

The English translation of the Psalm Responses, the Alleluia and Gospel Verses, and the Lenten Gospel Acclamations, and the Titles, Summaries, and Conclusion of the Readings, from the Lectionary for Mass © 1997, 1981, 1968, International Committee on English in the Liturgy, Inc. All rights reserved.
The prayers are from the English Translation of the Roman Missal © 2010 International Committee on English in the Liturgy Inc. (ICEL). All rights reserved.

PRAYING FOR THOSE WHO HAVE DIED

Recent deaths: *Johannes van der Mey, Dennis Hayes*
Anniversaries who are at this time: *Ilya Varenica, Jack Baker*

PRAYING FOR THE SICK IN OUR COMMUNITY

Our thoughts are with those who are unwell at this time.
Please submit a consent form to have a loved one prayed for.



Parish Priest

Fr Linh Tran: linh.tran@cam.org.au

Parish Staff:

Tracy Ford: tracy.ford@cam.org.au

Brian McMahon brian.mcmahon@cam.org.au
grovedale.liturgy@cam.org.au

Nazareth Parish Leadership Team

leadershipteam.grovedale@cam.org.au

Greg Carty Natalie Egerton
Denise Arnel Josh McElgunn
Brian Keane Rosemary Malone
Tracy Ford Paul Daffey
Paul Egan Rosemary Featherston
Fr Linh Tran

Nazareth Safeguarding Committee

Marg Mahoney —Chair person
Rosa Rebula —Grovedale
Rosemary Malone —Torquay
Fran Findlay —Anglesea

Parish Office

43a Surfcoast Highway, Torquay Vic 3228
Phone: 9412 8444
Email: grovedale@cam.org.au

Parish Presbytery

72 Marine Drive, Torquay Vic 3228
If you have an urgent pastoral need, you are able to contact Fr Linh at the Presbytery on 9412 8443

Our Parish Schools:

Nazareth Catholic Primary School

Griffith Street, Grovedale 3216

Principal: Reuben Johnson Phone: 5243 0502

St Therese Catholic Primary School

Grossmans Rd, Torquay 3228

Principal: Josh McElgunn Phone: 5261 4246

Lisieux Catholic Primary School

South Beach Rd, Torquay 3228

Principal: Susan Ryan Phone: 9089 6614

St Catherine of Siena Catholic Primary School

125 Warralily Boulevard, Armstrong Creek 3217.

Principal: Donna Bryce Phone: 5264 5934

Iona College

242 Horseshoe Bend Rd, Charlemont 3217

Principal: Damian McKew Phone: 5229 0009

Home Visits / Communion at Home

Anglesea: Liz Clark 5263 1812

Grovedale: Jill Healy 5241 4070

Torquay: Annie Byrne-Phillips 0409 516 907

Bulletin Notices

Please have them to the Office by Wednesday evenings.

Email: grovedale@cam.org.au

Postal: 43a Surfcoast Highway, Torquay Vic 3228

Office Hours

Our hours are:- **Tuesday - Friday, 9:00 am - 3:00 pm.**

Outside of these hours, please leave a message and one of the staff will contact you when they are next in the office.

Office Closed on Public Holidays

HAYDEN

When it comes to real estate across Geelong & the Surf Coast, there's only one team to turn to.

Bryan Hayden | 5261 2101 | 0417 613 250

SALES | LEASING | PROPERTY MANAGEMENT | LAND | COMMERCIAL | PROJECTS

Would you like to advertise your business here? Please reach out to the Parish Office to discuss
03 9412 8444



White Cross
HEALTHCARE SOLUTIONS

51 WEST FYANS ST. NEWTOWN 3220

PH: 03 5222 6666

FAX: 03 5222 6600

WWW.WHITECROSS.COM.AU



"FUNERALS YOUR WAY"

5248 3444

www.kingsfunerals.com.au

Kings
FUNERALS

HERE FOR YOU

65+ YEARS

AFDA MEMBER

GREATER GEELONG

THE BELLARINE PENINSULA

THE SURF COAST